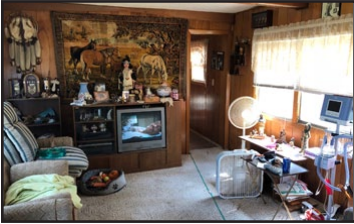




MURRAYLAND AGENCY, INC.

www.murraylandagencyinc.com



43 Pommier Lane, Garvin, MN

Description: 2 BR, 1 Bath manufactured home on 2 large lots. Lake view
 Lot Size: 41,900 sq. ft.
 Sq. Footage: Home - 744 sq. ft.
 Exterior: Metal & Vinyl
 Roof: Metal & Rubber
 Heating System: Forced Air
 Water: Shared Well
 Sewer: City
 Elec. Entrance: Breakers
 Taxes: \$1212.00 Annually
 Basement: None

Listing Price: \$122,000
 Legal: Lots 21 and 22, Block 2, Inlet waters Addition and a 2/9ths interest in Lot 22, Block 1, Inlet Waters Addition
 Garage: Single
 Appliances: Stove, Refrigerator, Washer, Dryer, Freezer
 Deck: Yes
 Water Softener: Rented
 Bedrooms: 2
 Bathrooms: 1
 MLS: 6031909

MURRAYLAND AGENCY, INC.



Luann J. Hansen, Broker
Currie, MN/Tracy, MN
Cell (507) 828-3945



Jody Lehnhoff, Agent
Tracy, MN
Cell (507) 829-3999



Pamela Schreier, Agent
Slayton, MN
Cell (507) 360-2314

Currie Office (507) 763-3599 Tracy Office (507) 212-6688
Slayton Office (507) 836-6996



www.murraylandagencyinc.com

